

# State of Wyoming Corner Record

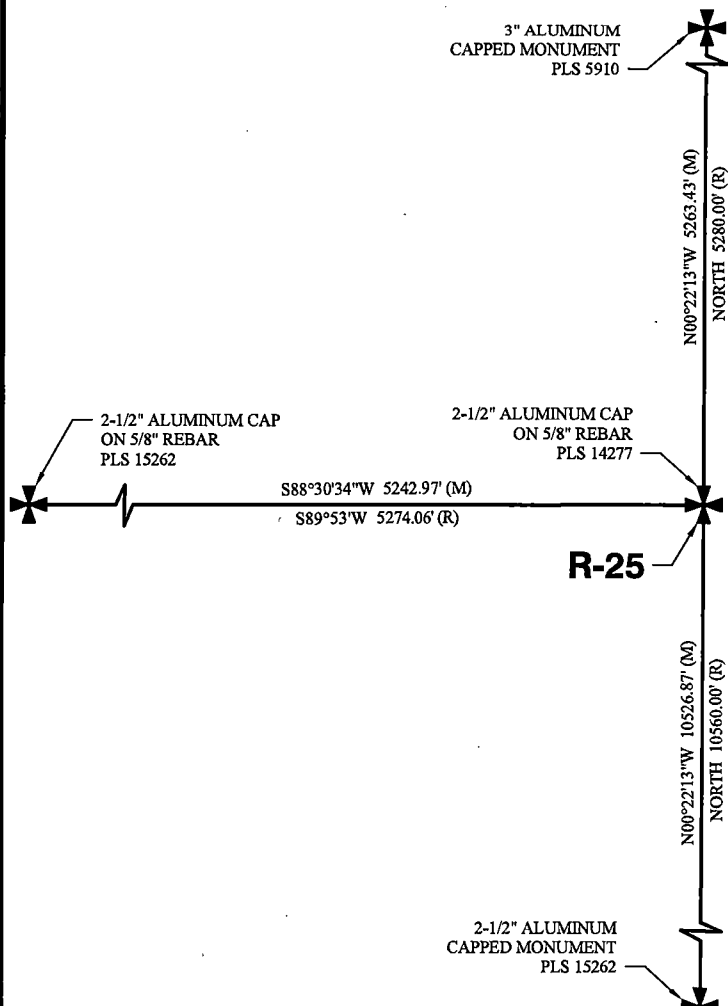
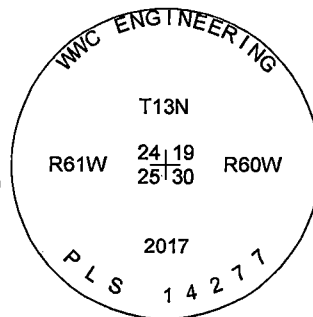
(In compliance with the CORNER PERPETUATION AND FILING ACT, Wyoming Statutes, 1997, Section 33-29-140, et seq., and the Rules and Regulations of the Board of Registration for Professional Engineers and Professional Land Surveyors)

Reverse side of this form may be used if more space is needed.

Record of original survey and citation of source of historical information (if corner is lost or obliterated.) Description of corner monumentation evidence found and/or monument and accessories established to perpetuate the location of this corner. Sketch of relative location of monument, accessories, and reference points with course and distance to adjacent corner(s) (if determined in this survey). Method and rationale for reestablishment of lost or obliterated corner.

**EVIDENCE RECORD:** 1871 GLO Survey: North along the east boundary of section 25, 80.00 chains. Set a sand stone 18"x10"x7" for corner to sections 24, 25, 19 & 30.

**EVIDENCE FOUND:** August 2017: Found a set sand stone 16"x10"x6" with barbed wire wrapped under bottom side of stone. Barbed wire wrapped under bottom of the stone suggests it was used as a fence anchor and not set at original position of corner to sections 24, 25, 19 & 30. Set a 2 1/2" aluminum cap marked as shown on a 5/8" rebar, 20" long, 2" above ground at single proportionate position between northeast corner of section 24 and standard corner common to sections 36 & 31.



**LEGEND**

- FOUND SECTION CORNER AS NOTED
- FOUND STANDARD CORNER AS NOTED
- (R) RECORD (1871 GLO SURVEY)

BASIS OF BEARING:  
BEARINGS AND DISTANCES ARE BASED ON A WYOMING STATE PLANE COORDINATE SYSTEM, NAD 1983, EAST ZONE, GROUND DISTANCES

N.T.S.

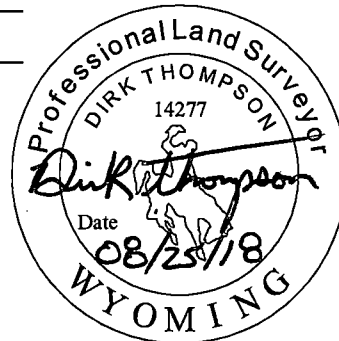
Date of Field Work: August 23, 2017 Office Reference: 2017-135

## CROSS INDEX DIAGRAM

	1	2	3	4	5	6	7	8	9	10	11	12	13	14	15	16	17	18	19	20	21	22	23	24	25	
A																										A
B																										B
C		6					5					4						3						2		C
D																									1	D
E																										E
F																										F
G		7																							12	G
H																										H
J																										J
K																										K
L		18																							13	L
M																										M
N																										N
O																										O
P		19																							24	P
Q																										Q
R																										R
S																										S
T		30																							25	T
U																										U
V																										V
W																										W
X		31																							36	X
Y																										Y
Z																										Z

Land Surveyor / Firm / Address  
Dirk Thompson  
WWC Engineering  
1849 Terra Avenue  
Sheridan, WY 82801  
 Telephone: (307) 672-0761

This corner record was prepared by me or under my direction and supervision.  
 SEAL & SIGNATURE



RECP #: 739886  
 RECORDED 10/1/2018 AT 1:32 PM BK# 2598 PG# 320  
 Debra K. Lee, CLERK OF LARAMIE COUNTY, WY PAGE 1 OF 1

Corner Name: Northeast Corner Section: 25 T 13N R 61W ; 6TH P.M. Cross-Index No.: R-25  
 SBRPEPLS/PLSW: March 1994; PLSW January 1998